

PACE[®] **TECHNOLOGIES** *www.metallographic.com*

TERAPRESS TP-7500S **Hydraulic Mounting Press**

3601 E. 34th St.
Tucson, AZ 85713 USA
Phone +1-520-882-6598
FAX +1-520-882-6599
<https://www.metallographic.com>
email pace@metallographic.com

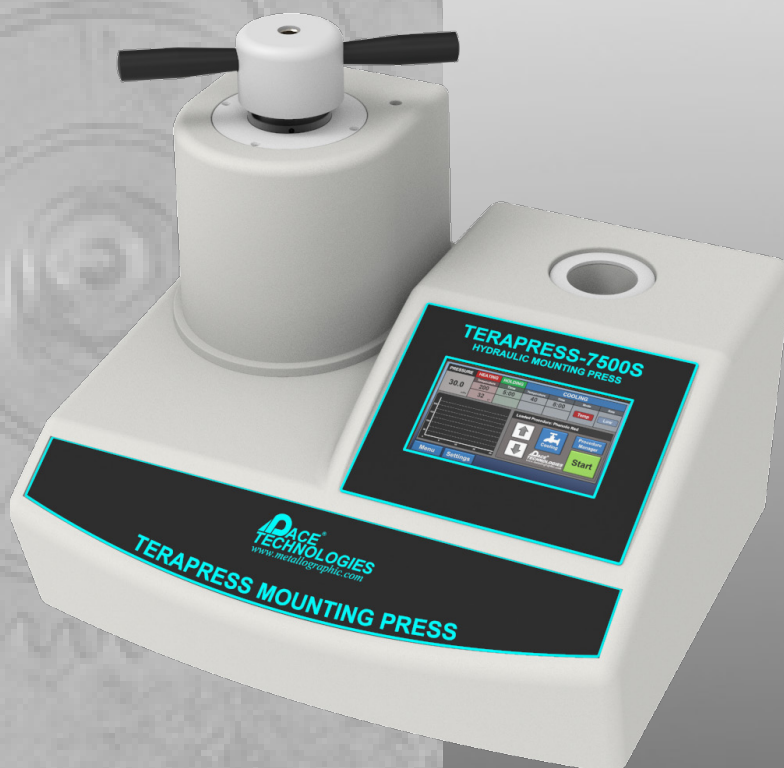
TERAPRESS TP-7500S **Compression Mounting Press**

- Automatic
- Programmable
- Electro-Hydraulic press
- 1000/2000 Watt heaters
- Water cooling
 - Temperature
 - Time
 - Manual
- Interchangeable molds (1-inch up to 2-inch) or Fixed mold sizes (faster heating cooling)
- Easy to use
- High resolution display
- Highly reproducible
- Flexible
- Ideal for all materials
- Robust and durable design
- Economical

The TERAPRESS TP-7500S programmable electro-hydraulic automated mounting press (Part No. TP-7500S) has a solid, easy to use, robust design. With electro-hydraulic force and heating up to 200°C, molding is very efficient.

•Features

- Max. programmable temperature 200°C
- Easy hydraulic force control
- 1-inch to 2-inch interchangeable molds for flexibility or fixed mold size for faster heating and cooling
- Multiple cooling modes (manually, to temperature or for a specified time)
- Rapid ram movement for faster throughput



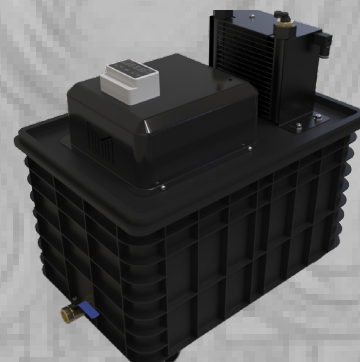
Machinery directive 2006/42/EC
RoHS Directive 2011/65/EU

Technical Specifications:

Feature	Specification
Mount Size	1 to 2-inch (25-40 mm)
Mold Cylinders	Interchangeable or Fixed Mold size
Force	Electro-hydraulic
Cooling	Water
Cooling Modes	Time, Temperature, Manual
Dimensions (W x D x H)	21 x 19 x 19-inch (534 x 485 x 485 mm)
Electrical Specifications	110 / 220V 50/60 Hz
Heater Specification	1000 Watt (110V / 15 amp) 2000 Watt (110V / 20 amp) 2000 Watt (220V/ 10 amp)
Weight	68 lbs (32 kg)
Part Number	TP-7500S
Recirculating Tank (14 gallons) with Pump (optional accessory)	TP-TANK

PACE[®]
TECHNOLOGIES
www.metallographic.com

PACE Technologies
 3601 E. 34th St, Tucson, AZ 85713 USA
 Phone +1-520-882-6598 FAX +1-520-882-6599
<https://www.metallographic.com>
 email pace@metallographic.com



Recirculating / Cooling Tank

Interchangeable Mold Assemblies

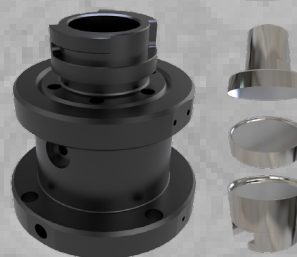
Description	Flat Ram	Chamfered Ram
1-inch mold	TP75-0100	TP75-0100C
1.25-inch mold	TP75-0125	TP75-0125C
1.5-inch mold	TP75-0150	TP75-0150C
2-inch mold	TP75-0200	TP75-0200C
25 mm mold	TP75-25	TP75-25C
30 mm mold	TP75-30	TP75-30C
40 mm mold	TP75-40	TP75-40C



Interchangeable
Mold Assemblies

Fixed Size Mold Assemblies

Description	Flat Ram	Chamfered Ram
1-inch mold	TP75-0100H	TP75-0100HC
1.25-inch mold	TP75-0125H	TP75-0125HC
1.5-inch mold	TP75-0150H	TP75-0150HC
2-inch mold	TP75-0200H	TP75-0200HC
25 mm mold	TP75-25H	TP75-25HC
30 mm mold	TP75-30H	TP75-30HC
40 mm mold	TP75-40H	TP75-40HC



Fixed Mold Assemblies

TERAPRESS Mold Spacers for Double Mounts

Description	Flat Ram	Chamfered Ram
1-inch spacer	TPS-0100	TPS-0100C
1.25-inch spacer	TPS-0125	TPS-0125C
1.5-inch spacer	TPS-0150	TPS-0150C
2-inch spacer	TPS-0200	TPS-0200C

