

MEGA-T300 Abrasive Cutter

MEGA-T300
300 mm (~12-inch)
Abrasive Saw



MEGA Wheel and Table Feed Cutters

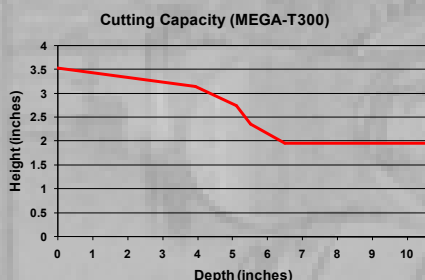
- Highly reproducible
- Easy to use
- User friendly
- Robust and durable design
- Low cost
- Easy to service
- Support bench (optional)

Benefits

- Wheel feed controlled cutting
- Cutting capacity up to 4 inches (100 mm) solid stock sample using a 300 mm (~12-inch) blade
- Powerful 5.5 hp (4 KW) motor
- Twin t-slotted stainless steel table
- Electronic braking system

Manual Cutting

• The MEGA-T300 abrasive saw is a manual wheel feed cutter. This allows for the samples to be positioned in the x,y and z-axis positions.



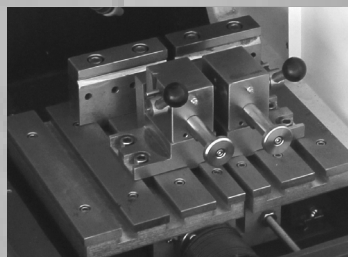
Applications:

- Ferrous metals
- Non-ferrous metals
- Foundry castings
- Power metallurgy
- Heat treated parts
- Specialty alloys
- Wrought metals

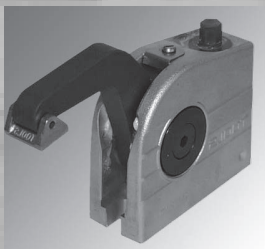


Machinery directive 2006/42/EC
 Low Voltage Directive 2006/95/EC
 Electromagnetic Compatibility directive 2004/108/EC

Clamping Systems for MEGA-T300 Cut-off Machines



Fast Cam Locking Vise



Vertical Clamping Vise

Clamping Devices

Proper clamping or fixturing is required to prevent blade breakage and to optimize the cut. Vises range from a vertical clamping vise to fast cam locking devices.

Fast cam locking vise, right	Fast cam locking vise, left	Vertical clamping vise	65 mm (2.6-in) height adapter for Vertical vise	Adjustable mechanical stop
QCR-1100	QCL-1100	MG-01	MG-H	MG-0150

Abrasive Cutting Fluids

Pace Product Name	Catalog Number	Packaging
MAXCUT Abrasive Cutting Fluid	MAXCUT-1000-128	1 gallon
MAXCUT Abrasive Cutting Fluid	MAXCUT-1000-5G	5 gallons
MAXCUT 2 Cutting Fluid with Anti-corrosion Additive	MAXCUT2-1000-128	1 gallon
MAXCUT 2 Cutting Fluid with Anti-corrosion Additive	MAXCUT2-1000-15G	5 gallons
MAXCUT OL1000 Water Soluble Emulsion Abrasive Cutting Fluid	MAXCUT-OL1000-128	1 gallon
MAXCUT OL1000 Water Soluble Emulsion Abrasive Cutting Fluid	MAXCUT-OL1000-5G	5 gallons

300 mm MAXCUT Abrasive Blades (32 mm Arbor)

Pace Product Name	Catalog Number	Packaging
Soft non-ferrous metals (aluminum, tin, copper, zinc, etc.)	MAX-E300	10
Hard non-ferrous metals (titanium)	MAX-C300	10
Soft steels	MAX-E300	10
Case hardened steels	MAX-VHS300	10
Hard Steels	MAX-VHS300	10
Universal Thin Blade	MAX-A300	10
General Purpose Blade	MAX-I300	10



PACE[®]
TECHNOLOGIES
www.metallographic.com

3601 E. 34th St.
 Tucson, AZ 85713 USA
 Phone +1 520-882-6598
 FAX +1 520-882-6599
www.metallographic.com
 email pace@metallographic.com



Technical Data

Specification	MEGA-T300
Cut-off size (Blade diameter)	300 mm (12-inch)
Cutting Capacity	Max dia. 4-inch (100 mm)
Wheel Feed	Manual
Dimensions (WxDxH)	36 x 34 x 26-inches (hood closed) 36 x 34 x 32-inches (hood open)
Table Dimensions	10.4 x 8.25-inch (265 x 210 mm)
Cooling Unit	16 gallons (60 l)
Motor Power	5.5 hp (4 KW) (3-phase)
Speed (rpm)	2910 rpm at 208-380V/50 Hz 3492 rpm at 208-380V/60 Hz 2910 rpm at 440-480 V/50 Hz 3492 rpm at 440-480V/60 Hz
Electrical Specifications	208Y, 380, 400, 480V 50/60 Hz (3 phase)
Model Type	Bench Top
Weight	350 lbs (160 kg)
Support Bench	MEGA-BENCH (optional)